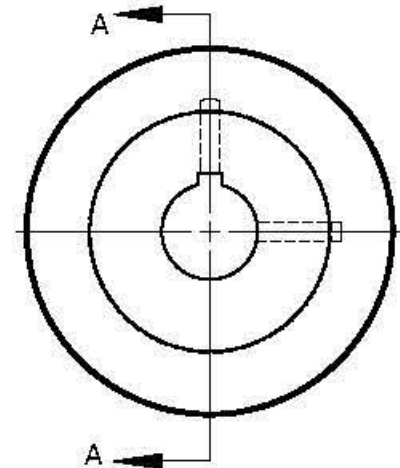
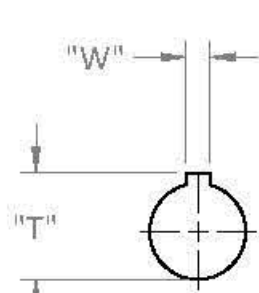
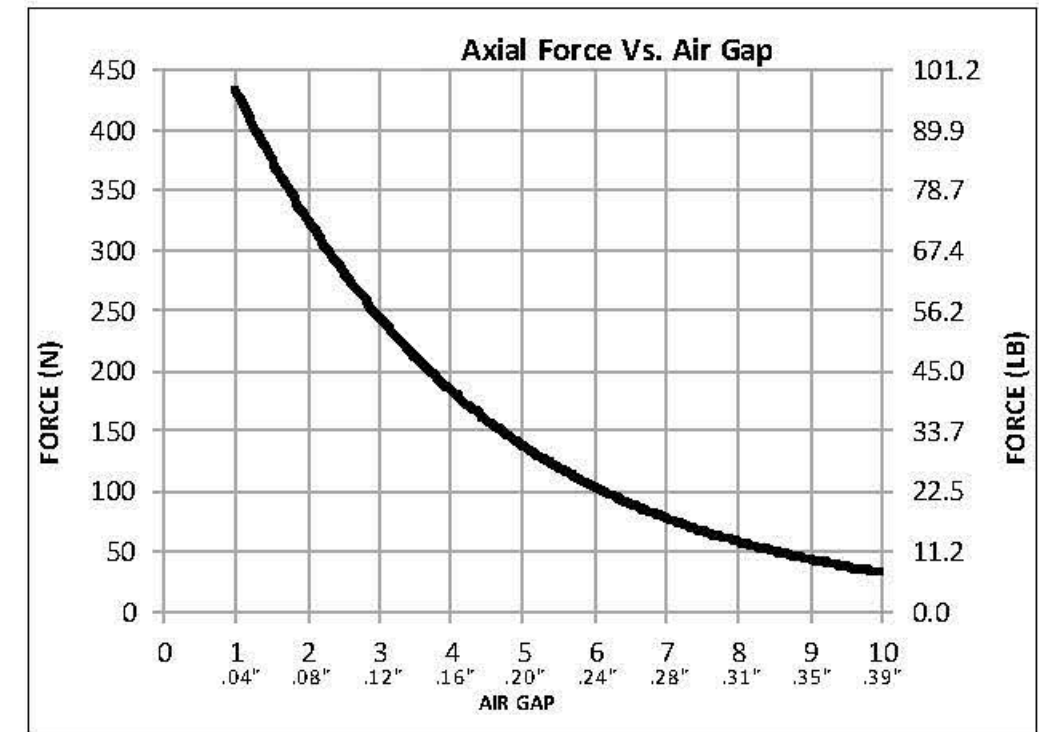
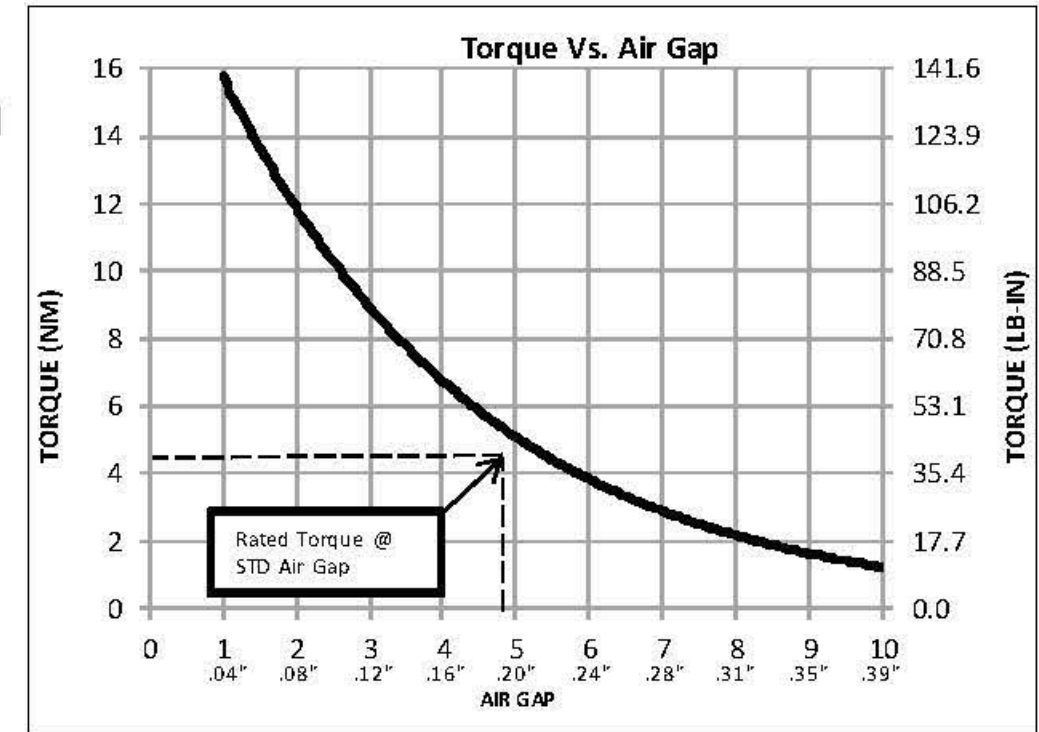
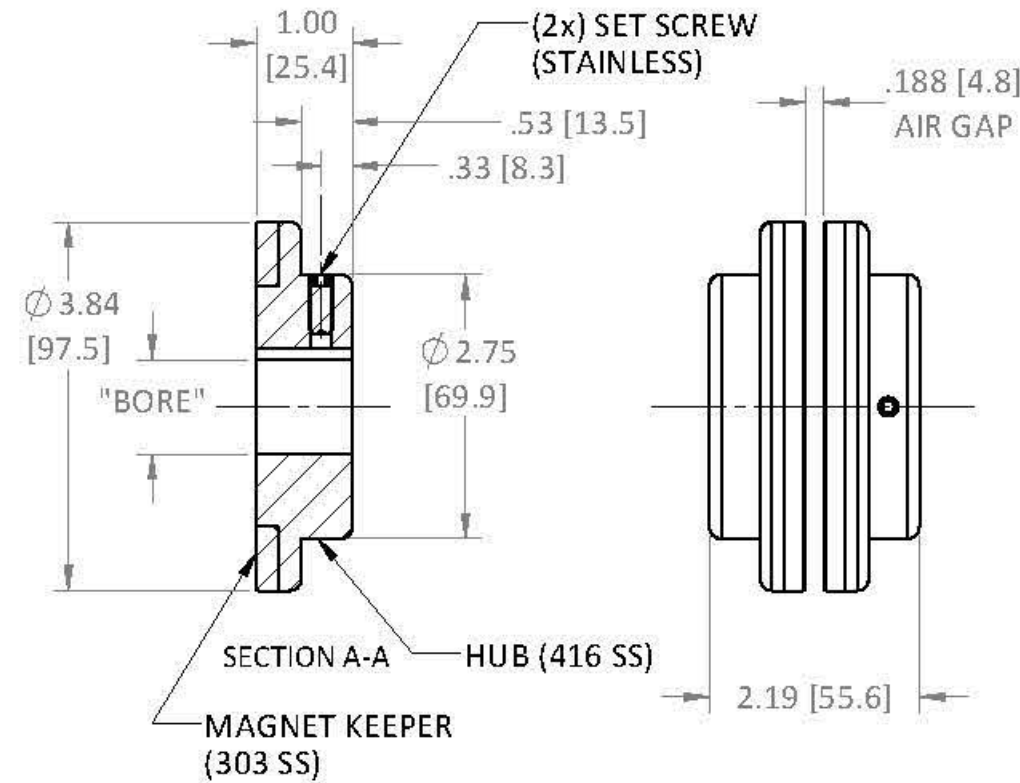


MODEL	RATED TORQUE @ STD. AIR GAP		BREAKAWAY TORQUE		MAX RPM
MDC 5	4.5 Nm	40 Lb-in	5.0 Nm	44 Lb-in	11,700

REVISIONS			
REV.	ECN.	DESCRIPTION	DATE



COUPLING HALF:
WEIGHT: 2.20 Lbs (1.00 Kg)



MODEL	BORE		W		T		SET SCREW (2x) CUP POINT
	mm ^{H8}	in ^{+0.001}	mm ^{+0.05}	in ^{+0.002}	mm ^{+0.25}	in ^{+0.010}	
MDC 5							
	SOLID		-		-		-
	11.00	.433	4.00	.158	12.80	.504	M5-0.8 X 20mm
	12.70	.500	3.175	.1250	14.22	.560	#10-32 X 3/4
	14.00	.551	5.000	.1969	16.30	.642	M5-0.8 X 20mm
	15.88	.625	4.763	.1875	18.01	.709	#10-32 X 3/4
	19.00	.748	6.000	.2362	21.80	.858	M5-0.8 X 20mm
	19.05	.750	4.763	.1875	21.26	.837	#10-32 X 3/4
	22.23	.875	4.763	.1875	24.49	.964	#10-32 X 3/4
	24.00	.945	8.000	.3150	27.30	1.075	M8-1.25 X 20mm
	25.40	1.000	6.350	.2500	28.30	1.114	1/4-20 X 5/8
	28.00	1.102	8.000	.3150	31.30	1.232	M8-1.25 X 20mm
	28.58	1.125	6.350	.2500	31.52	1.241	1/4-20 X 5/8

OTHER SIZES AVAILABLE; SPECIFY BOTH BORE AND KEYWAY

USED ON	SCALE 1:2	MATERIAL SEE PRT DWG
UNLESS OTHERWISE SPECIFIED:		FINISH SEE PRT DWG
ALL DIMENSIONS ARE IN INCHES TOLERANCES: DECIMAL: XX ± .01 - XXX ± .005 ANGULAR: ± 1° GEN. CONCENTRICITY: .001 T.I.R. MACH. FILLETS: .010 R MACH. EDGES: .015 R OR CHMF. UNSPECIFIED RADII: .015 R IN MICROINCHES RMS 32 GEOMETRIC: TO MIL-STD. 8 REMOVE ALL BURRS & SHARP EDGES		DRAWN AMD 11/5/14 CHECKED DESCRIPTION DWG. NO. REV.
SIZE: B		